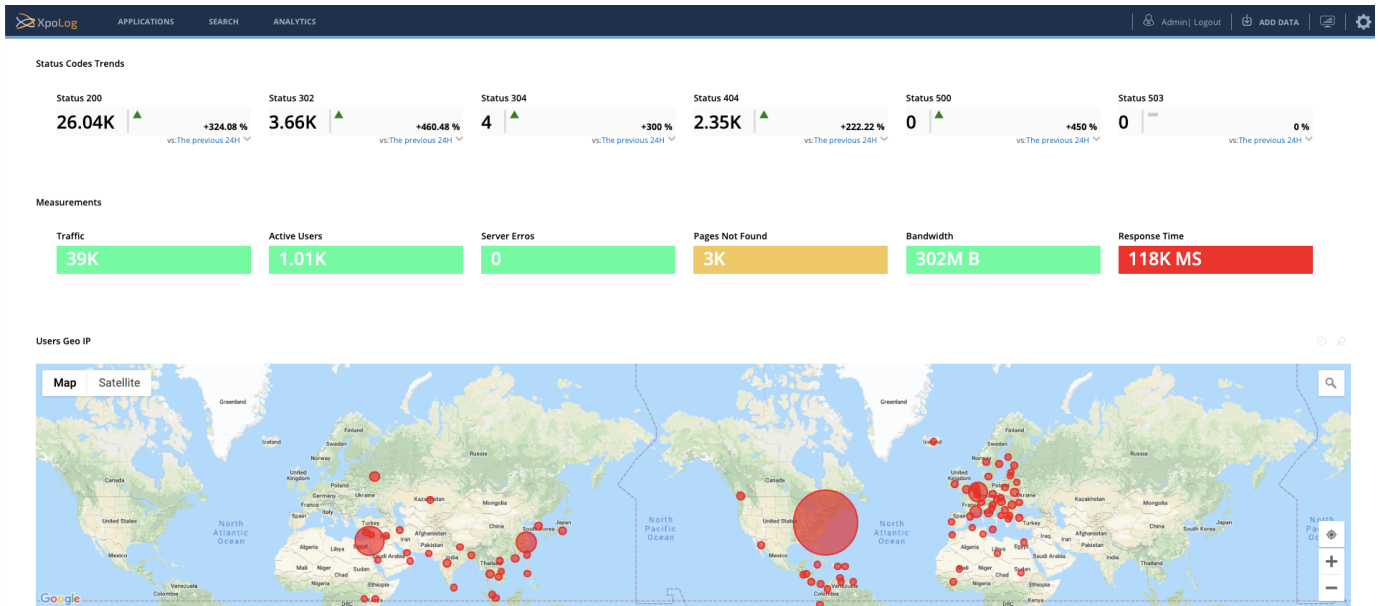


# Managing Gadgets

Gadgets are the data visualization units which are displayed in dashboards. Multiple gadgets can be added to a single dashboard to visualize data in many forms and shapes such as line chart, area chart, bar chart, column chart, pie chart, events list or table, analytics summary, transactions list and more:



Adding a gadget is done from within a dashboard. After clicking a dashboard to load it, select the 'Add Gadget' from the



icon on the top right hand side of the Dashboard toolbar. The Add a Gadget administration console opens:

# ADD A GADGET



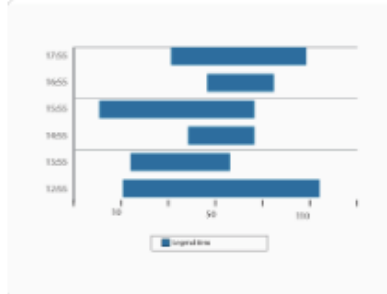
## VISUAL TYPES

- All
- Line Charts
- Pie Charts
- Column Charts
- Bar Charts
- Area Charts
- Scatter Charts
- Gauges
- Table
- Events
- Map
- Transactions

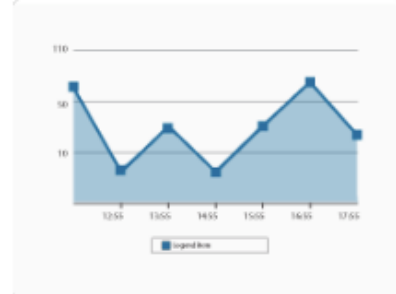
## PREDEFINED TYPES

- All
- Analytics

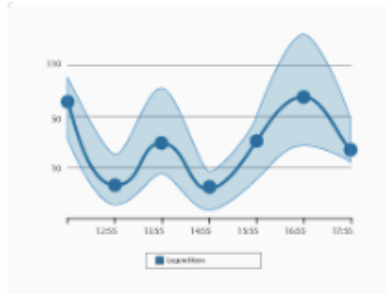
Bar Range Chart



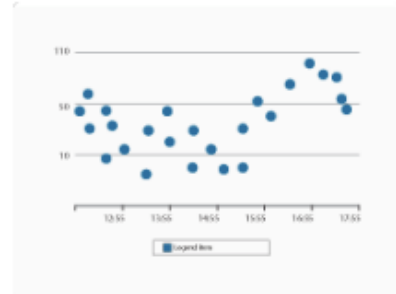
Area Chart



Area Range Chart



Scatter Chart



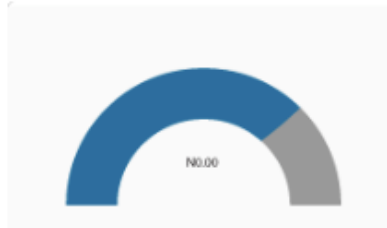
Speedometer



VU Meter



Solid Gauge



Search Result Table

Source	Problem	Type	#	Severity
MailBarvers	Error	AutoDetected	120	High
MailBarvers	Message was not found	AutoDetected	88	Medium
MailBarvers	Access has been denied	AutoDetected	15	Medium
MailBarvers	Wrong user id query	AutoDetected	13	Medium
MailBarvers	Wrong user partum	AutoDetected	14	Medium

Click one of the Visual Types to filter the list of available gadgets to that specific type or type the name in the search box

to filter the list.

By clicking the image of the selected type, the gadget's administration screen will appear for defining the gadget.

### **To add a gadget to a dashboard:**

1. Create a dashboard or load an existing dashboard to which you want to add a gadget, and select the 'Add Gadget' from the



icon on the top right hand side of the Dashboard toolbar.

The Select Gadget page opens, displaying the available gadget types.

2. Click a gadget type.

A page opens for defining the information for the new gadget. Fill in the fields of the selected gadget type:

- For a **Line Chart** gadget, see [Adding a Line Chart Gadget](#)
- For a **Pie Chart** gadget, see [Adding a Pie Chart Gadget](#)
- For a **Column Chart** gadget, see [Adding a Column Chart Gadget](#)
- For a **Bar Chart** gadget, see [Adding a Bar Chart Gadget](#)
- For an **Area** gadget, see [Adding an Area Gadget](#)
- For a **Scatter** gadget, see [Adding a Scatter Chart Gadget](#)
- For a **Gauges** gadget, see [Adding a Gauge Gadget](#)
- For a **Table** gadget, see [Adding a Table Gadget](#)
- For an **Events** gadget, see [Adding an Events Gadget](#)
- For a **Map** gadget, see [Adding a Map Gadget](#)
- For a **Transactions** gadget, see [Adding a Transactions Gadget](#)
- For an **Analytics** gadget, see [Adding an Analytics Gadget](#)