

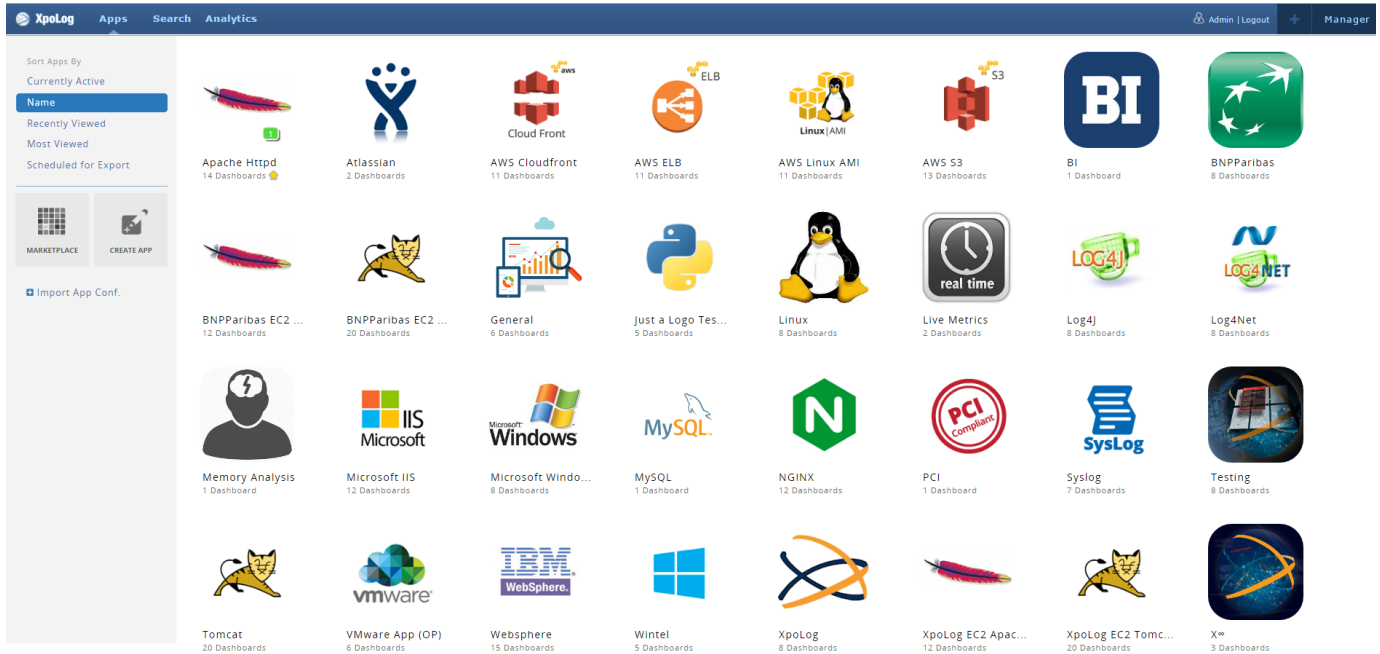
# Apps Administration

XpoLog Apps are logical containers of dashboards.

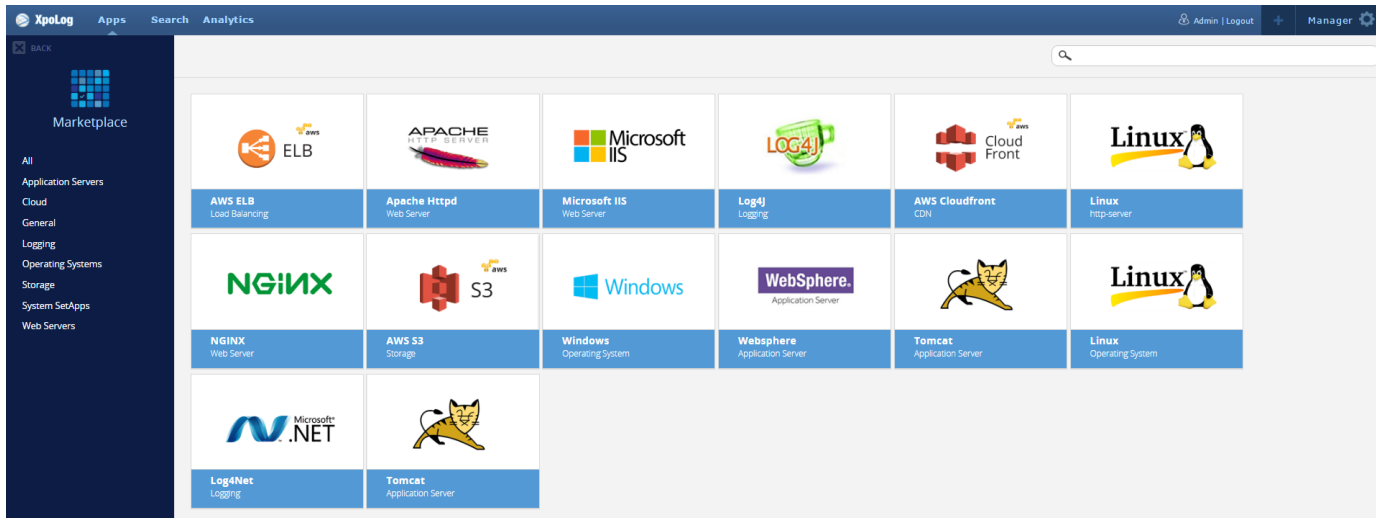
Apps enable organizations to create and manage a rich variety of data visualizations for multiple teams, systems and environments in a convenient and logical way.

Each App may be identified by a different color, image and name and endow a set of characteristics to its associated dashboards and gadgets. Apps in XpoLog may be [Custom Apps](#) created by users and/or [Out of the Box Apps](#) from XpoLog Apps Market Place.

To enter the App console click the Apps tab. The available Apps are displayed.



Review the Out of the Box Applications delivered to you by XpoLog:



XpoLog allows to open multiple Apps/Dashboards in a single browser session. Mouse over the



icon allows quick navigation between the open Apps/Dashboards:

Xpolog Apps Search Analytics

All Apps (102)

Active Apps

Active Dashboards

- Apache Httpd
- AWS Cloudfront
- Xpolog
- Syslog
- Log4j

- Http Errors
- Geo Data
- OS Browsers Devices
- Pages and URLs
- Referrers
- Resources
- Sites
- Statistics
- Visitors
- Performance
- Data Trends

App Name	Number of Dashboards
Log4j	13 Dashboards
Tomcat	20 Dashboards
Wintel	5 Dashboards
Testing	8 Dashboards
VMware App (OP)	6 Dashboards
Live Metrics	2 Dashboards
AWS ELB	13 Dashboards
Memory Analysis	1 Dashboard
AWS Cloudfront	11 Dashboards
NGINX	12 Dashboards
BI	1 Dashboard
Microsoft IIS	12 Dashboards
AWS S3	13 Dashboards
Syslog	7 Dashboards
WebSphere	15 Dashboards
General	6 Dashboards
Linux	8 Dashboards
Log4Net	8 Dashboards
PCI	1 Dashboard